

# Wacom

*Proven*

# Hardware

*Performance*



WACOM® for Business

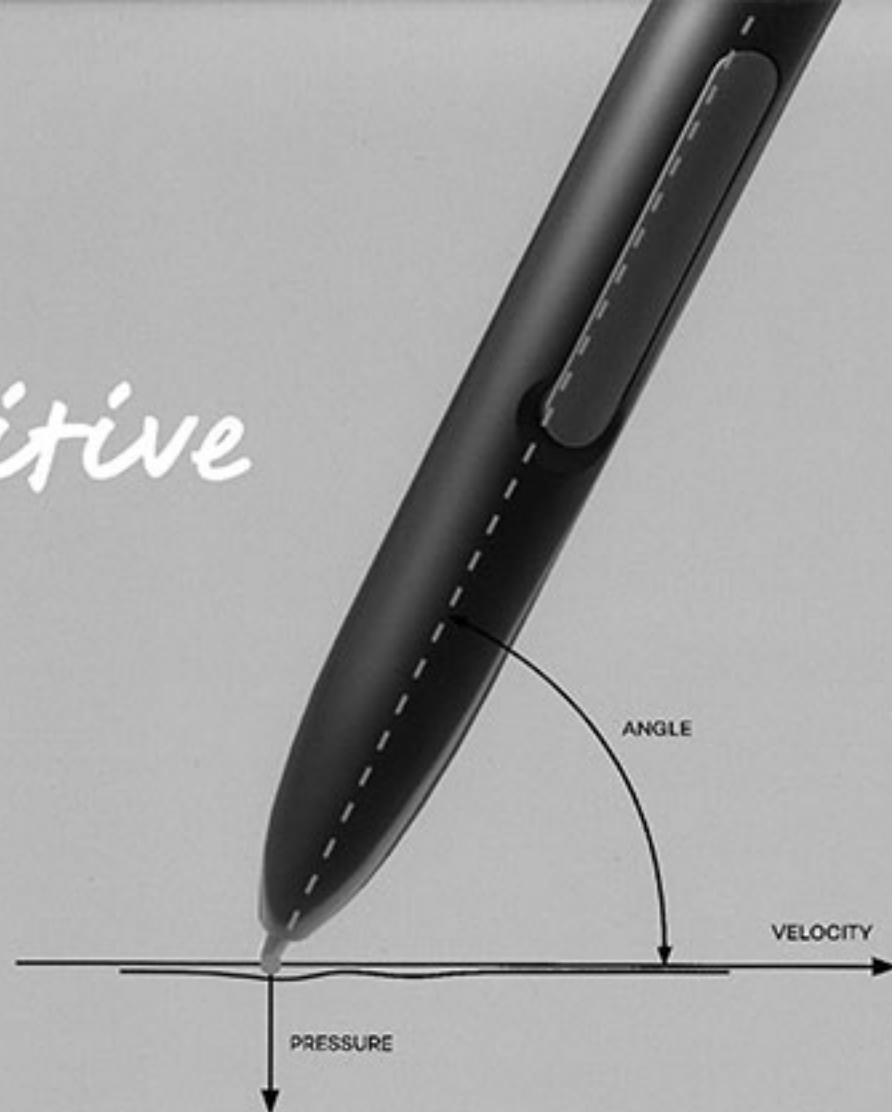
# Collect signatures

## *Simple and most intuitive*

From medical treatment to mortgages, a signature is still the most familiar and personal way to prove your commitment in important, decision-making moments. But workflows requiring in-person signatures are inefficient and time-consuming to complete when they rely solely on paper. Wacom's solutions for Signature Capture bridge that gap.

The Wacom for business product portfolio includes a broad range of market-leading digital pen-enabled devices, and innovative software products that enhance them with the power of digital ink. Together, they make organizational document workflows more human and more digital. In addition, Wacom products make it easy to integrate our hardware and software into existing applications and workflows, regardless of device or operating system.

However organizations choose to use them, Wacom products deliver a powerful combination of reliability, performance and style. They also help realize the efficiency and cost benefits of paperless digital document workflows, while maintaining a familiar signing and annotation experience for users.



### Some of our customers

#### Banking and Finance

Allior Bank (Poland), BNP Paribas (France), Confederation of Spanish Savings Banks (CECA) (Spain), Citibank (Korea)

#### Field Services

Hitachi High-Tech Fielding (Japan), Toll Group (Australia)

#### Healthcare

Eda Dental Clinic (Japan), Sharp HealthCare (San Diego), ASAN Medical Center (Korea), Usmiech na 5 (Poland)

#### Hospitality & Tourism

Hertz (Chile), Hilton (Milan), Hotel Resol Ikebukuro (Japan), Kerry Hotel (China), KT Rent-a-car (Korea)

#### Insurance

Hoken no Madoguchi (Japan), Mitsui Sumitomo Insurance (Japan)

#### POS Retail

Lalaport Shopping Mall (Japan), Ludwig Gortz (Germany), GRT Jewelry (India), Shinsegae Department Store (Korea)

#### Public Sector

Berlin State Authority for Citizens and Regulatory Affairs (Germany), Heje-Taastrup (Denmark)

#### Telecommunications

China Telecom Corporation (China), Mobitel (Slovenia), Nokia (Singapore), Sunrise Telecommunications (Switzerland)



#### Signature Pad

### STU-540

Best solution for security conscious customers



reddot award 2017  
winner

STU-540 is Wacom's top-of-the-line 5" LCD colour signature pad which features state of the art encryption.

Customizable marketing images and PIN/Key pad images can be added for branding and credit card/currency options as well as bank transaction.

STU 540 supports both USB mode and VCP mode in virtual environments.

Serial connectivity available as an option with separate accessory kit.



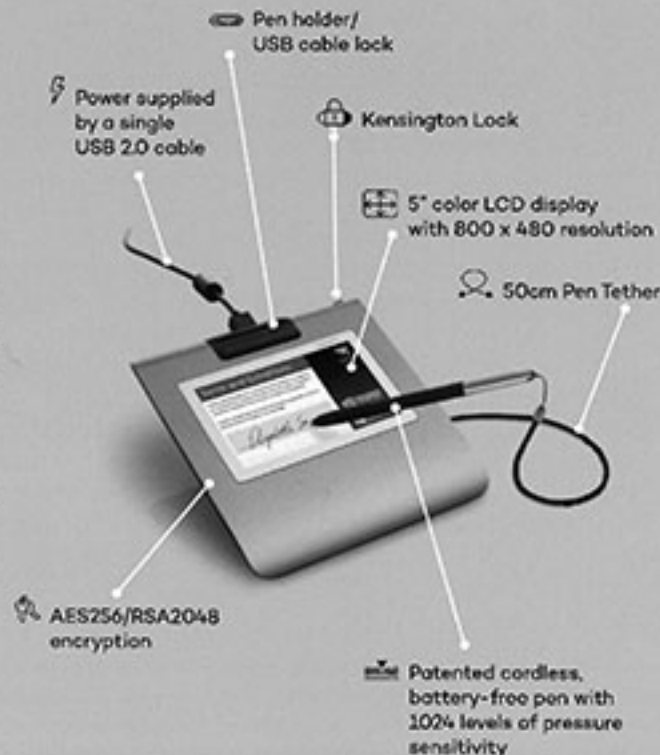
#### Signature Pad

### STU-530

Brings colour to counters and check-outs.

With its 5" high resolution colour LCD screen, the STU-530 not only enables high-precision capturing of signatures, it can be utilized for branding or advertising purpose.

The STU-530 is the long-life signature pad for heavy use, especially in stationary use at counters and check-out systems.



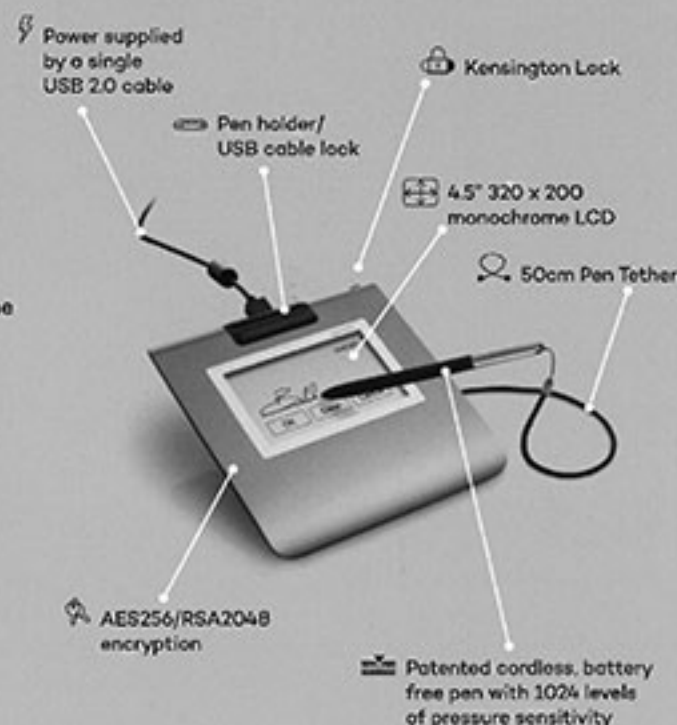
#### Signature Pad

### STU-430

Robust and ergonomic design.

The STU-430 is a full-featured, monochrome signature pad with a new thin design and a low-profile, flat surface. The 4.5" screen is large enough to capture longer signatures as well as to accommodate soft buttons in addition to the signature area.

The transfective LCD is easily readable in varying light conditions.

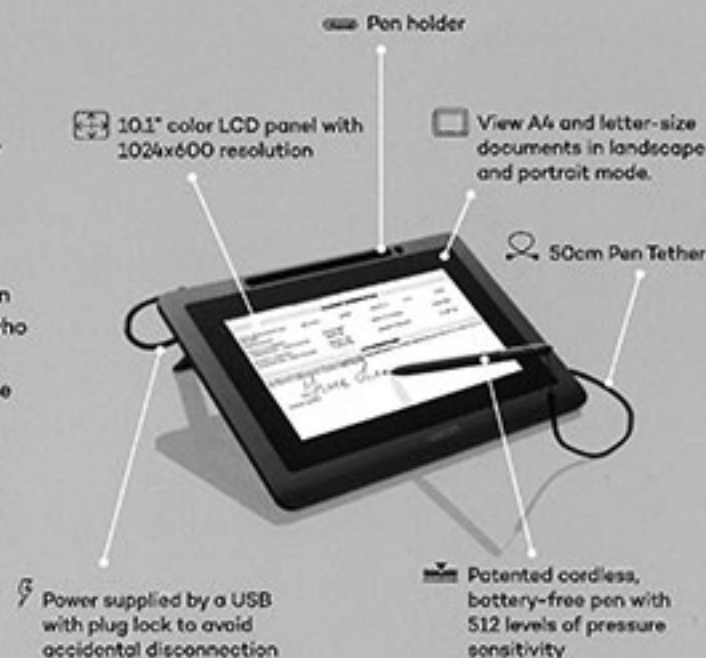


#### Interactive Pen Display

### DTU-1031X

Minimal foot print pen display that shows view and fill out full-size documents

The DTU-1031X is the economical solution for corporate or institutional customers who require a display with a minimal footprint that allows users to view or fill out full-size documents and sign them electronically. With its 10.1" LCD, customers can clearly see the contents of a document and sign with confidence.

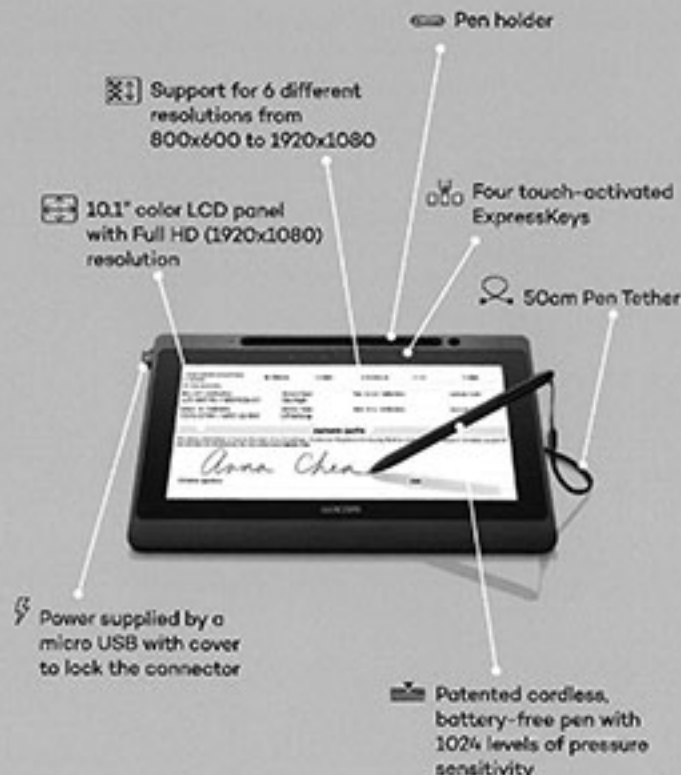


#### Interactive Pen Display

### DTU-1141B

Specifically designed for viewing and signing electronic documents directly on screen

The DTU-1141B is the leading eDocuments and eSignature solution in Wacom's portfolio. This is a unique product that combines a 10.1" Full HD resolution LCD display, state-of-the-art encryption, and power from just one USB cable, to provide an ideal document viewing and signing experience.



#### Interactive Pen Display

### DTH-1152

Multi-touch compact pen display which supports both landscape and portrait modes

The DTH-1152 provides both pen and touch input in a compact pen display for convenience in reviewing, annotating and applying eSignatures to digital documents.

DTH-1152 supports Linux, Citrix, and VMware environments to address a wide range of industries.



#### Smartpad

### PHU-111 Wacom Clipboard

Write on paper documents and instantly convert it to digital format.



reddot award 2018 winner

The Wacom Clipboard is A4/Letter size clipboard which captures analog handwritten texts on paper and convert it to digital text in real-time.

The paper document can be uploaded immediately for easy document management.

No scanning is necessary and biometric handwritten signatures can be captured and attached to the digital document.



#### Interactive Pen Display

### DTK-2451 / DTH-2452

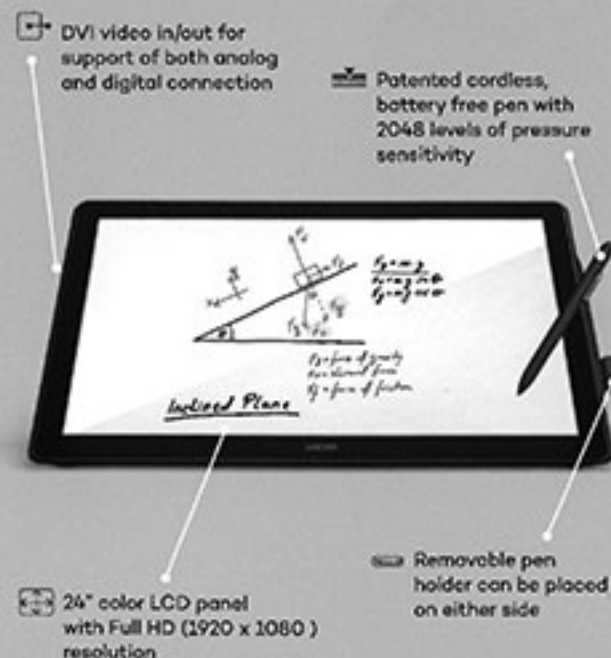
Top of the line, the largest pen displays ever offered to B2B customers



reddot award 2018 winner

The DTK-2451 and DTH-2452's generous active area provides a comfortable work surface for writing and signing eDocuments or annotating directly on presentations.

The DTH-2452's multi-touch screen support touch gestures and navigation.





# Wacom Software

## *A new layer of value*

### Wacom sign pro PDF App

The sign pro PDF Enterprise App is a standalone application that enables organizations to easily replace ink signatures on paper documents with electronic signatures on PDFs. Using the app allows any document to be signed and then processed or archived digitally, without the need for any document printing or scanning. The app is also an ideal solution for adding digital form input, free-hand annotations, and post-its onto PDFs.

Typical use cases include signature capture during over-the-counter services within banks, repair shops, post offices and other consumer/retail environments.

Signatures can be captured offline with no need for logins into online systems, and all documents are automatically locked and protected via sophisticated encryption.

For high-security use cases, the sign pro PDF Enterprise App can be utilized together with Wacom digital pens and styli to capture and store biometrically accurate signatures that are legally binding.

### WILL™ SDK for signature

The WILL™ SDK for signature allows you to integrate support for Wacom signature pads or pen displays into your applications. This allows you to offer users stunning signature capture and display in a wide range of use cases across financial services, legal processes, sales transactions, and many other identity verification scenarios.

Using the WILL™ SDK for signature together with Wacom's signature pads ensures text and images are displayed clearly on the screen, even after hundreds of thousands of transactions.

The WILL™ SDK for signature also gives you all the tools you need to:

- Capture biometric handwritten electronic signatures within applications on Wacom STU series pen displays, pen tablets and mobile devices running Windows, iOS or Android.
- Automatically render digital ink within documents
- Easily integrate digital signature capture into any document workflow
- Display dialog boxes and captures full biometric signature data that can be leveraged for a range of exciting new use cases.

## More human



## *More digital*

